



BUTTERFLY



CUMBERLAND COUNTY, NC  
FAYETTEVILLE  
AREA  
CONVENTION AND VISITORS BUREAU



## 2021 Butterfly Sandhills Open

Sponsored by Cape Fear Table Tennis Club

2-Star Tournament Sanctioned by USATT with \$3,000 in Cash Prizes in sanctioned events

May 7-9, 2021

Freedom Courts Sportsplex—3126 Gillespie Street-Fayetteville, NC 28306

www.capefearthtc.net or 919-418-4269

### Participant Information

Last Name \_\_\_\_\_ First Name \_\_\_\_\_ ☐ Male ☐ Female DOB \_\_\_\_/\_\_\_\_/\_\_\_\_

Mailing Address \_\_\_\_\_ Affiliated Club \_\_\_\_\_

City \_\_\_\_\_ State \_\_\_\_\_ Zip \_\_\_\_\_ Email \_\_\_\_\_

Phone: \_\_\_\_\_

USATT Membership # \_\_\_\_\_ USATT Membership Expiration Date \_\_\_\_\_ Current USATT Rating\* \_\_\_\_\_

**Current membership required** / \* Rating as of 4/30/2021 will be used for event eligibility

Parent/guardian Information (If participant is under age 18)

Parent Last Name \_\_\_\_\_ Parent First Name \_\_\_\_\_ Emergency Contact # \_\_\_\_\_

Date	Start Time	Event	Prizes 1st Place	Prizes 2nd place	Prizes 3rd Place	Entry Fee	Enter Fees for Selected Items
Fri 5/7	6:00pm	<b>Unsanctioned Fun Singles Open</b> 36 players max	Trophy + \$100	Trophy	Trophy	\$15.00 per person	
Sat 5/8	9:00am	Giant Round Robin Main Event  <b>Round 1:</b> 80 players max: up to 16 groups of 5 players  <b>Round 2:</b> 2 groups of 8 Players in 5 Divi- sions (A,B,C,D,E) Top 4 players in group A and Top 2 players in groups B,C,D,E ad- vance to single elimination playoff round immediately following Round 2	Trophy + A: \$1,000 B: \$150 C: \$100 D: \$50 E: \$50 Butterfly Gift Card	Trophy + A: \$500 B: \$75 C: \$50 D: \$25 E: \$25 Butterfly Gift Card	Trophy + A: \$250	\$70.00  INCLUDES LUNCH	
Sun 5/9	10:00am	<b>1600 and Over</b> Round Robin Event 48 Players Max—8 groups of 6 - top 2 advance to a single elimination playoff	Trophy + \$300	Trophy + \$150	Trophy + \$75	\$35.00	
Sun 5/9	2:00pm	<b>U1600</b> Round Robin Event 48 Players Max—8 groups of 6 - top 2 advance to a single elimination playoff	Trophy + \$100	Trophy + \$50	Trophy + \$25	\$35.00	

Date	Start Time	Event	Prizes 1st Place	Prizes 2nd place	Prizes 3rd Place	Entry Fee	Enter Fees for Selected Items
EVENT FEES DUE							
Donation to USATT National Team Fund. Your contribution will be forwarded to USATT to support the US National Team							
In order to participate in this USATT sanctioned tournament, <b>USATT requires players either to have a current USATT General membership, or to purchase a USATT Tournament Pass.</b> If you don't have a current USATT General membership with information filled in above, then please fill in the USATT Membership page on the last page of this registration and enter appropriate USATT fees here.							
TOTAL FEES DUE (Payment of all fees required for registration to be processed.)							

**Register on-line at [www.omnipong.com](http://www.omnipong.com)**

The official tournament software of the USATT

**ENTRY DEADLINE:** All entries must be received no later than midnight on April 30. Late entries may be accepted only at the discretion of the Tournament Director.

**Sponsors:** Butterfly, Cape Fear Table Tennis Club, Fayetteville Area Convention & Visitors Bureau & Freedom Courts Sportsplex, Secure Background Screeners

**Tournament Referee:** Bill Englebreth, CR, NU

**Tournament Director:** Amy Karpinski, CU

**USATT SANCTION:** This tournament has a USATT 2-Star Sanction Level. A USATT membership or Single Tournament Pass is required for entry into events, and results from those events will be sent to the USATT for inclusion in USATT player ratings calculations.

#### **Overview for the Saturday Giant Round Robin Main Event:**

##### **Round 1**

- The final number of groups will depend on the number of entries and will be adjusted by the Referee and Tournament Director as needed.
- 80 players are snake seeded using geographical separation into 16 groups of 5 players per group. These first round groups will be determined based on each player's USATT rating or on an estimated rating. Each group of 5 players will have an A, B, C, D and E rated player, and each player will play one match against every other player in his or her group (i.e., a round robin).
- At the end of Round 1, players are placed into one of 5 Divisions (Division A, Division B, Division C, Division D, Division E). If the Round 1 group contained 5 players, the top player enters the A Division, the next player enters the B Division, the next player enters the C Division, the next player enters the D Division and the last player enters the E Division.
- Exception: If a player in a Round 1 group is not present or ready to play, then the tournament referee can determine that player is a "no show". Once the referee designates a player as a "no show", then players may opt to "move up a division" if and only if those seeded above them do so, and the option is authorized by the tournament referee.
- **Note: Tournament Director and Referee reserve the right to expand (or reduce) the size of the groups based upon actual entries received.**

## Round 2

- Each player plays Round 2 on the afternoon of the same day on which he/she played Round 1 in the morning.
- In Round 2, each player plays within the Division in which they were placed after Round 1. Based on Round 1 results, players are placed into up to 2 groups in each Division; each group will consist of approximately 8 players depending on the total number of entries. The players are snake seeded within the groups in their Division and geographic separation may be applied.
- Each group within each Division plays in Round Robin format.
- **The top 2 players in each group within the B, C, D & E Divisions advance to Round 3.**
- **The top 4 players in Division A will advance to Round 3.**

## Round 3

- Round 3 for the Giant RR Division takes place immediately following Round 2 and is a single elimination format.
- Round 3 of Division A is a single elimination of 8 players.
- Round 3 of Divisions B, C, D & E is a single elimination of 4 players
- **Single elimination matches will not be delayed for late players. Late arrival will result in default.**

**FORMAT FOR ALL EVENTS:** All games to 11 or win by 2 and all matches will be best out of 5 games with the exception of the following:

Division A Semi and Final matches will be best of 7

1600+ Final will be best of 5

**FORMAT FOR OTHER EVENTS:** Round robin (RR) groups will be formed for first rounds of the U1600 and 1600+ and other events. So each player is assured of multiple matches in the first round. The top two from each group will advance into a single elimination playoff.

**UNRATED PLAYERS:** Players without USATT ratings may enter, advance, and win prizes in the Giant Round Robin event. Unrated players may enter the U1600 event, **BUT** they may not advance into the single elimination playoff and therefore will not be eligible for prize money or awards in the rated event. Unrated players in singles events with defined rating limits **WILL** get credit for matches won in the first round in terms of USATT rating point accrual. Unrated players may be seeded in the draw at the sole discretion of the Tournament Director, and by the means/mechanism selected by the Tournament Director.

## **General Tournament Information**

The Freedom Courts Sportplex will be open for warm-up on Friday, May 7 at 5:00pm. Our unsanctioned fun tournament begins at 6:00pm on Friday night, but we should still have some open tables for warm-up. On Saturday, May 8 and Sunday, May 9, the doors open for warm-up at 8:30am and play will begin at 9:00am sharp on Saturday and 10:00am Sunday.

### **Event Limitations:**

The tournament has a limited number of players or teams allowed for each event. Complete entries with payment are processed in the order received. Once an event is full (based on a target number set at the discretion of the Tournament Director), that event will be closed and no further entries accepted. Entering early will give you a better chance of getting into an event before it is full.

### **Waitlists:**

If an event is full and you would like to be put on a waitlist, you need to email the tournament director (amykarpinski@capefearttc.net) and she will put you on the waitlist for the event(s) for which you would like to register. If a position opens up, she will contact you by phone or email and you will have 24 hours to pay your entry fee(s). If payment is not received within 24 hours upon notification, your waitlist spot will be forfeited and the next player on the waiting list will be notified.

### **Refund Policy:**

- ALL entry fees paid are NON-REFUNDABLE as of Friday, April 23, 2021.
- Events may be cancelled for insufficient entries, or other reasons, at the discretion of the Tournament Director.
- If an event is cancelled for any reason, then entry fees will be refunded. Refunds may take up to two weeks.
- Entry fees which are refundable will be refunded back to the original credit/debit card. In order to claim a refund, **a written withdrawal request** must be submitted by the player for the tournament director to consider a refund. Please include your name, phone number and the event(s) you wish to be withdrawn from.
- An administrative fee of \$10 will be deducted from all refunds.

**No-Show Policy:** Players who are not present at match start time for any event forfeit their position and entry fees for that event.

**Dress Code:** USATT Dress Code will be enforced in all cases as determined the Tournament Referee. **No white shirts or shorts will be allowed.** Non-marking athletic shoes must be worn.

**Rules:**

All USATT regulations apply and all participants must abide by the decisions of the tournament staff and officials. If ejected due to violations of any USATT or Freedom Courts Sportsplex rules, the player will be defaulted automatically and no fee refunds will be issued. Players that default a match or matches for non-health related reasons may not be eligible for prizes.

**Equipment:**

All USATT regulations apply. Only USATT/ITTF approved equipment will be used. There will be 20 barriered 23' x 46' courts. The Freedom Courts Sportsplex has rubber flooring with wood-grain finish, high ceilings and excellent lighting. Balls will be white Butterfly R40+ competition balls. The tables are Butterfly Centrefold.



All tables will be available for purchase at a steeply discounted rate. (Retail price is \$2299.99). This is a great way for you to take home a top quality tournament table that has only been used for this tournament! You must have a way to take it upon completion of the tournament. See tournament director for more information.

**Details**

- Approved by the International Table Tennis Federation (ITTF).
  - Official Table of WAB "We Are Butterfly" Clubs.
  - Legs are placed 400mm inward which complies with the ITTC ruling for wheelchair competitors.
  - Adjustable feet for leveling the table.
  - Table Facts
- SPECIFICATIONS:
- Top Thickness: 1" Wood
  - Rail/Rim: 2" x 3/4" Steel
  - Legs: 2" Square Steel
  - Wheels: 5" Locking Rubber Wheels
  - Weight: 280lbs
  - Safety Feature: Release Lock
  - Net Set: Europa
  - ITTF Approved: Yes
  - Playback Position: No
  - Adjustable Feet: Yes

**USATT Membership:** Players must have a currently active USATT membership to play in USATT sanctioned events. Players without a currently active membership at the time of registration must include their USATT registration or renewal fees along with their tournament event fees when submitting payment. Please see USATT membership page for more details on membership options and rates.

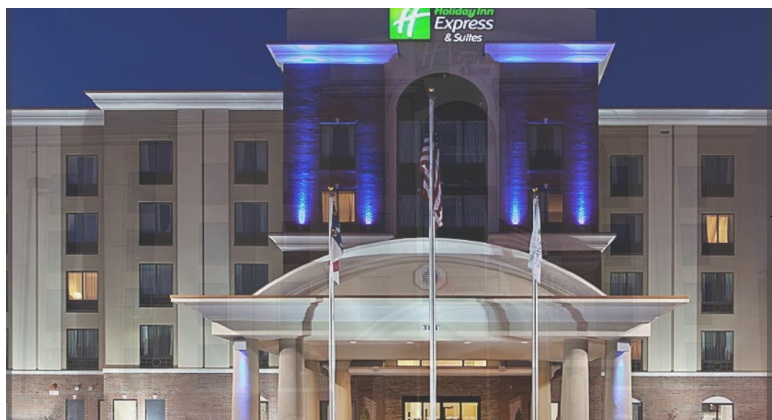
**Required USATT Statements:**

1. Events with insufficient entries may be cancelled at the discretion of the tournament director or tournament referee. Fees managed as outlined in the refund policy.
2. If a rating event is cancelled, player will automatically be placed in the next highest rating event (only if applicable based on tournament format). Not applicable in teams tournaments.
3. The current USATT rating system will be used for the purposes of conducting all draws with the possible exception of hardbat events, if offered. For players that do not have a USATT rating, an estimated USATT rating will be assigned based upon recommendation by a coach who knows the player or by visual evaluation of the player by a coach, whenever possible.

**Directions to the Freedom Courts Sportsplex:** Easily accessible from business 95/Hwy 301 which is Gillespie Street. Conveniently located 1.6 miles from the Fayetteville Regional Airport.



# Host Hotel



**\$104 + tax nightly  
blocked room rate  
Group Code: SHO**

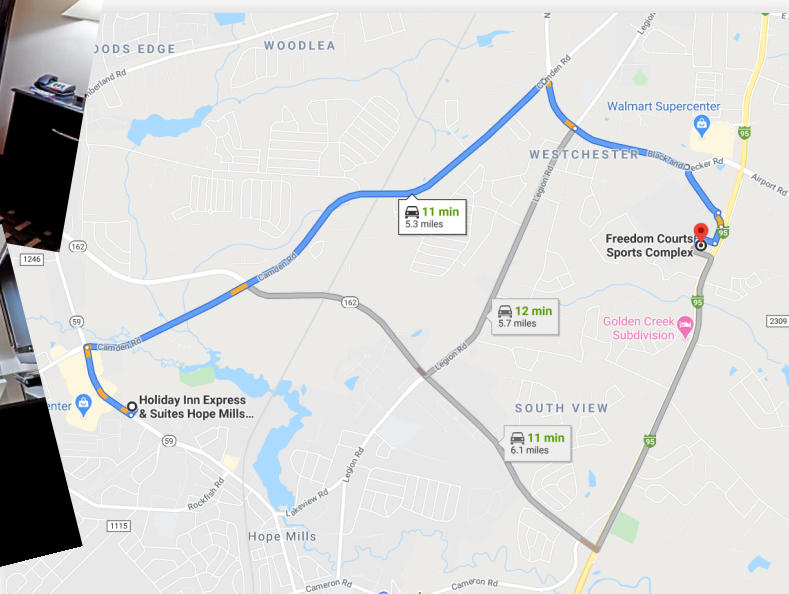
**Must book rooms  
by 4/30/21 to get  
discounted rate**

## **Holiday Inn Express & Suites Hope Mills- Fayetteville Arpt**

3111 N. MAIN STREET  
HOPE MILLS, NORTH CAROLINA  
28348  
UNITED STATES

CHECK IN: 3:00 PM  
CHECK OUT: 11:00 AM  
CHECK-IN AGE: 21

E-MAIL HOTEL  
1 910 4299990





## Tournament Hotel

# *Mt. Rose Hotel*

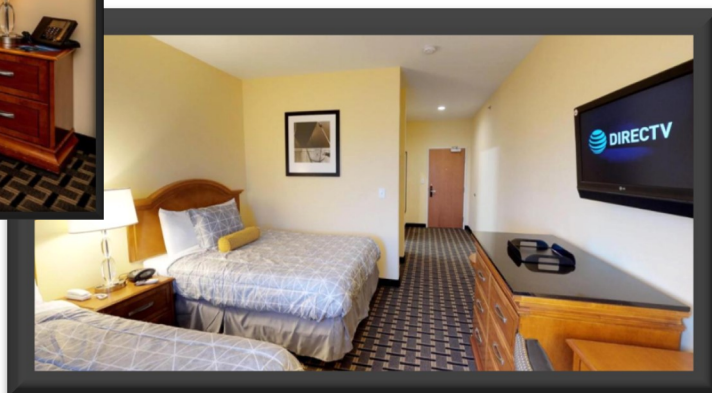
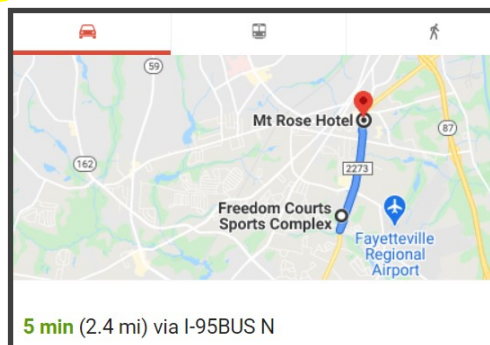
2320 Gillespie Street  
Fayetteville, NC 28306  
Phone: 910-485-6186

# \$65

+ tax per night

Call hotel directly and use:  
Code: Table Tennis

Must book rooms by  
4/23/21 to get discounted



# USATT Membership Application/Renewal

(Valid USATT General Membership or Tournament Pass is required by all players in USATT rated events.)

New / Renewal

Last Name \_\_\_\_\_ First Name \_\_\_\_\_ Male Female DOB \_\_\_\_/\_\_\_\_/\_\_\_\_

Mailing Address \_\_\_\_\_ Affiliated Club \_\_\_\_\_

City \_\_\_\_\_ State \_\_\_\_\_ Zip \_\_\_\_\_ Email \_\_\_\_\_

Phone: \_\_\_\_\_

USATT Membership # \_\_\_\_\_ USATT Membership Expiration Date \_\_\_\_\_ Current USATT Rating\* \_\_\_\_\_

**Current membership required** / \* Rating as of 6/1/2020 will be used for event eligibility

Affiliated Club: \_\_\_\_\_

Membership Types	Membership Level	Cost	Please check selected Option	Notes
Single Tournament Pass	Associate	\$20		Includes Associate Membership
Adult 1-year	General	\$75		
Adult 3-year	General	\$210		
Adult 5-year	General	\$325		
Lifetime	General	\$1300		
Junior 1-year	General	\$45		Available only to players under 18 years of age
Junior 3 year	General	\$125		Available only to players under 18 years of age for a 3 year period
Collegiate 1– year	General	\$45		Available only to full-time students at an accredited college or university. Proof of enrollment must be attached.
Household 1 year	General	\$150		Household is defined as a maximum of two adults and any number of minor children living at the same address. Please provide full names and birthdates of all additional household members flow.